

5 Howden

D'Entrecasteaux Channel, Tasmania

Howden

Tucked away in the northern corner of North-West Bay is this secluded little gem. Only a few kilometres from the Channel, you are sheltered from the north and south. Vehicular access is via Howden Road for launching your dingy or, alternatively, from the Margate Marina. The mooring backs onto picturesque sandstone cliffs with native vegetation, ideal for that quiet afternoon in the sun. The mooring is only a stone's throw from the Margate Marina, where the friendly staff will happily tend to your vessel's every need.

While there, why not visit the Margate Train, approximately 5 km down the road. Here you can find two well-stocked antique shops, or dine in the 'Pancake Parlour' aboard the old Tasmanian Limited's saloon. Other shops include a second-hand book store and lolly shop. While you're there, be sure to pick up some fresh local seafood from the roadside store. It's the one the locals won't tell you about.

About Island Mooring

Island Mooring is a groundbreaking, family-owned Tasmanian business whose owners wish to share their passion for boating around our island state. We provide short- and long-term mooring facilities for all types of craft, as well as offering a cruising route within the D'Entrecasteaux Channel. All moorings are registered with Marine and Safety Tasmania and are maintained in accordance with their guidelines and best practice.

Cruising Route

Our cruising route presently consists of nine professionally maintained swing moorings within the Channel and its northern approaches. Gone are the days of having to find a safe anchorage at the end of an otherwise relaxing day on the water. For an annual fee, boat owners now have the security of being able to book and use any number of moorings for short periods of time, year round, otherwise free of any charges. Cruise when and where you choose.

We are continually adding to our inventory of moorings, and would welcome suggestions from boat owners for new mooring locations and other cruising routes.

Fees

Subscriptions to our Channel cruising route are \$200 a year, with mooring numbers and GPS fixes supplied when you subscribe. The subscription entitles you to free, short-term use of any, or all, of our cruising route moorings for 12 months. Contact us for terms and conditions, or to hire one of our other moorings on a long-term basis.

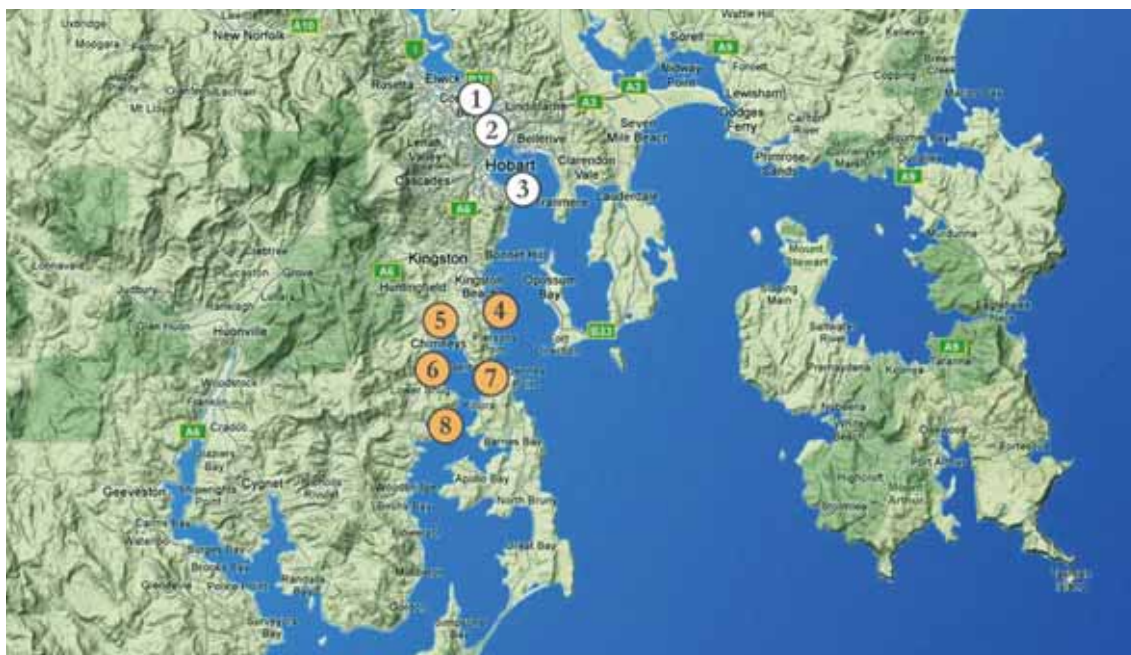
Happy cruising!

Contact: Wes Young

M: 0419 322 978

E: hello@islandmooring.com

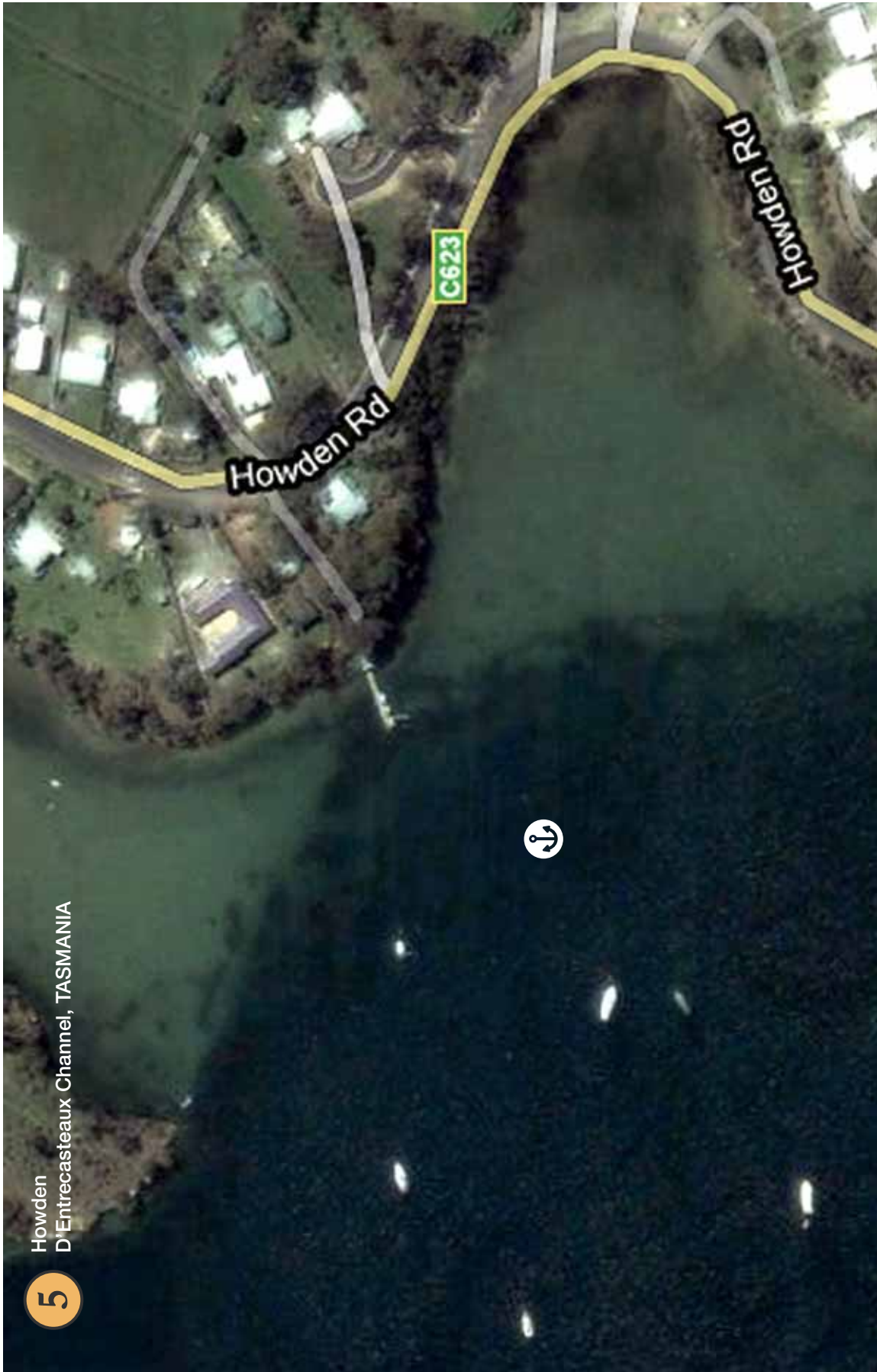
River Derwent and D'Entrecasteaux Region



- Long Term Moorings
- Cruising Route

KEY

1. Cornelian Bay
2. New Town Bay
3. Sandy Bay
4. Blackmans Bay
5. Howden
6. Margate
7. Dennes Point
8. Kettering



5

Howden
D'Entrecasteaux Channel, TASMANIA