

4 Blackmans Bay

D'Entrecasteaux Channel, Tasmania

Blackmans Bay

Located at the southern end of the beach, our mooring rests in about 8m of water and can handle vessels up to 10m in waterline length. With a stunning backdrop of sandstone cliffs and Ocean Esplanade, you are perfectly positioned to make the most of the area's dining and accommodation facilities.

Blackmans Bay features the attractive, sandy, Blackmans Bay Beach, with a small blowhole located in the reserve on Talone Road at the Kingston end of Blackmans Bay Beach. Although small in size, during heavy storms and swells the blowhole is quite exhilarating to see; and you can be safe in the knowledge your boat isn't going anywhere...

Between Blackmans Bay and Tinderbox is the Pierson's Point Lookout. An ideal stopping point with good views, Pierson's Point was named after one of Bruni D'Entrecasteaux's 1792 crew, a Benedictine priest-astronomer. Its first white settler was the River Derwent pilot, Michael Mansfield, who was able to view vessels approaching Hobart from both the Channel and Storm Bay, and make the necessary boarding preparations at the river entrance.

About Island Mooring

Island Mooring is a groundbreaking, family-owned Tasmanian business whose owners wish to share their passion for boating around our island state. We provide short- and long-term mooring facilities for all types of craft, as well as offering a cruising route within the D'Entrecasteaux Channel.

All moorings are registered with Marine and Safety Tasmania and are maintained in accordance with their guidelines and best practice.

Cruising Route

Our cruising route presently consists of nine professionally maintained swing moorings within the Channel and its northern approaches. Gone are the days of having to find a safe anchorage at the end of an otherwise relaxing day on the water. For an annual fee, boat owners now have the security of being able to book and use any number of moorings for short periods of time, year round, otherwise free of any charges. Cruise when and where you choose.

We are continually adding to our inventory of moorings, and would welcome suggestions from boat owners for new mooring locations and other cruising routes.

Fees

Subscriptions to our Channel cruising route are \$200 a year, with mooring numbers and GPS fixes supplied when you subscribe. The subscription entitles you to free, short-term use of any, or all, of our cruising route moorings for 12 months. Contact us for terms and conditions, or to hire one of our other moorings on a long-term basis.

Happy cruising!

Contact: Wes Young
M: 0419 322 978
E: hello@islandmooring.com

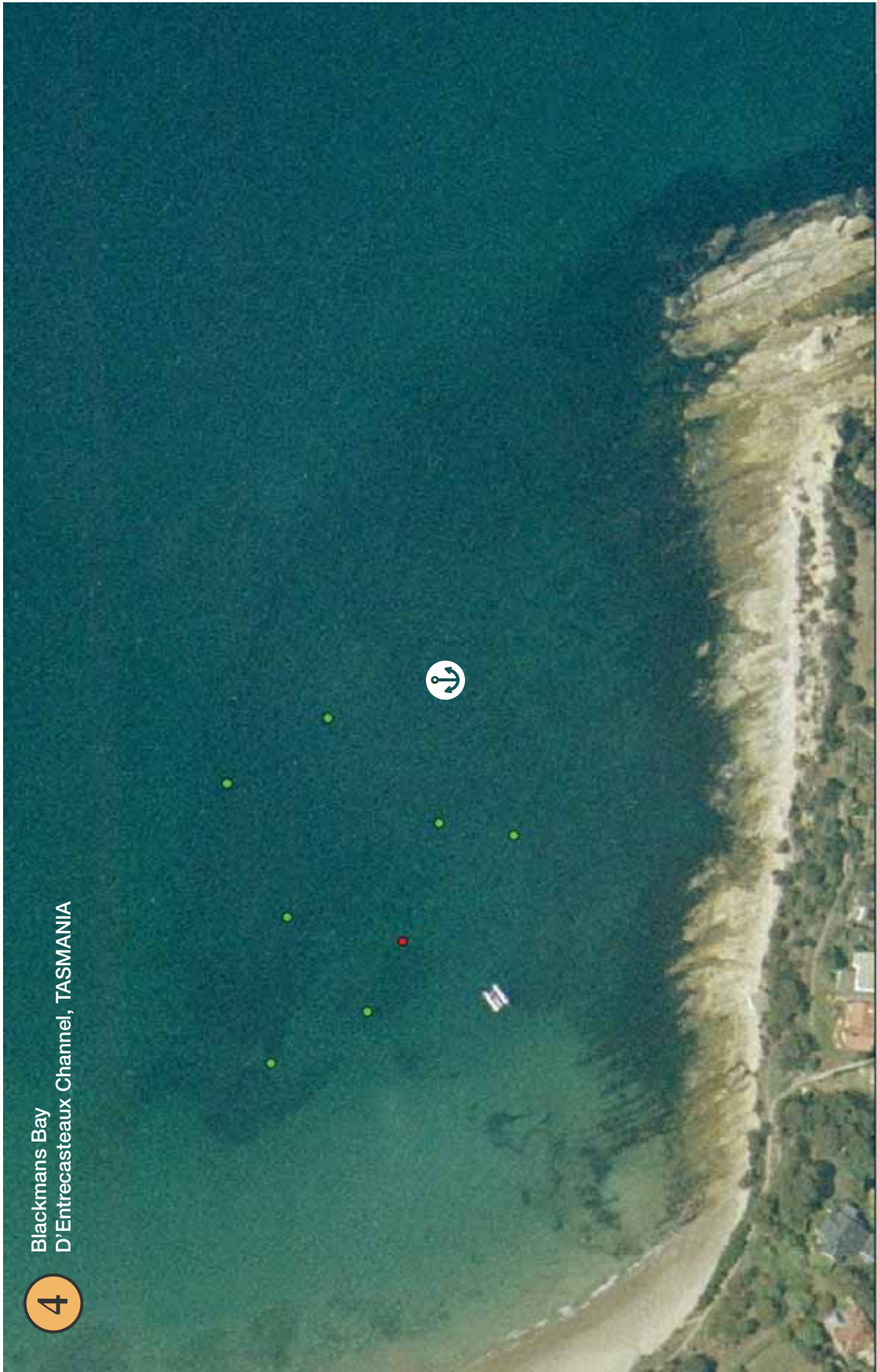
River Derwent and D'Entrecasteaux Region



- Long Term Moorings
- Cruising Route

KEY

1. Cornelian Bay
2. New Town Bay
3. Sandy Bay
4. Blackmans Bay
5. Howden
6. Margate
7. Dennes Point
8. Kettering



4

Blackmans Bay
D'Entrecasteaux Channel, TASMANIA